

80yrs
experience



Visit
ellerslieevents.co.nz

Great Northern Room



First Floor, Ellerslie Stand

An open, mid-sized room offering garden views and the option of natural light or complete blackout. With easy access from the first and second floors, the Great Northern Room is great for seminars or as a larger space for up to 300 guests. Alternatively this room is capable of hosting up to 240 guests for a lunch or dinner.



Room Specifications

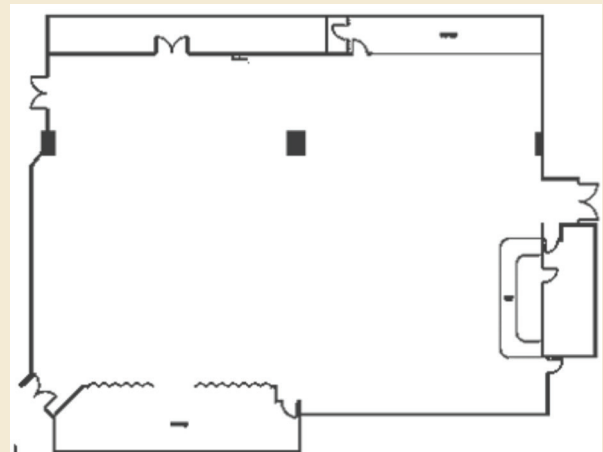
Set-up style

Theatre - 300
Cocktail - 350
Classroom - 140
Banquet - 220 without dance floor
Boardroom / U-shape - 60
Exhibition spaces - 30

Please note: These capacities are a guide only, your set-up requirements may alter the capacities.

Dimensions: 540 sqm

Ceiling height: Varies from 2.1m to 2.4m



+64 (0)9 524 4069

Ellerslie Racecourse
100 Ascot Avenue, Remuera,
Auckland 1050